



Digital Careers Upskill Programme

Helping upskill your employees and  
supercharge business growth



**REACH US AT**

0161 237 4444

[enquiries@skillsforgrowthsmc.co.uk](mailto:enquiries@skillsforgrowthsmc.co.uk)

[www.skillsforgrowthsmc.co.uk](http://www.skillsforgrowthsmc.co.uk)

# Fully Funded Digital Courses

Delivered by Serco in partnership with Skills for Growth - SME Support

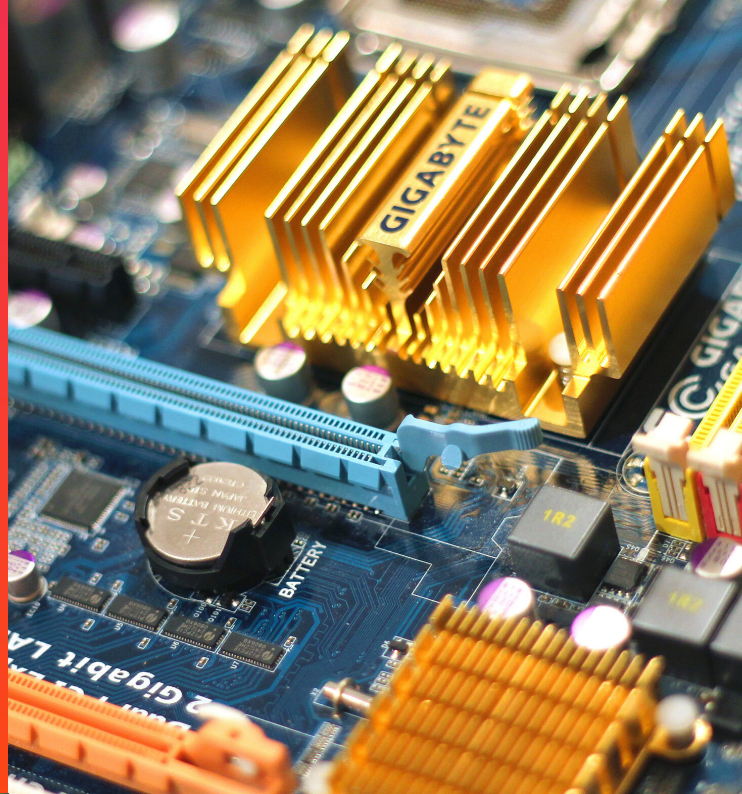


## SOFTWARE DEVELOPER

---

Gain foundation knowledge of software development, code writing and application development

[View](#)



## ESSENTIAL SKILLS FOR YOUR TECH CAREER

---

Gain an overview of non technical skills needed in the modern tech workplace.

[View](#)



## 3D COMPUTER AIDED DESIGN

---

For anyone interested to learn the fundamental commands and first principles that all 3D CAD systems follow

[View](#)





## GOOGLE ADS & FACEBOOK BLUEPRINT

---

Ideal for anyone looking to develop, run and monitor PPC campaigns

[Facebook](#)

[Google](#)



## INTRODUCTION TO DATA ANALYST

---

For anyone looking to start their journey into data analytics

[View](#)



## INTRODUCTION TO DIGITAL MARKETING

---

Ideal for anyone looking to start a career or develop the foundations in digital marketing

[View](#)





## SKILLS FOR GROWTH - SME SUPPORT

---

This fully funded skills consultation service is tailored to help up-skill your employees and improve productivity.

- Top level business diagnostic and identification of skills gaps
- Individual training plans for your employees
- Dedicated Skills Coach (consultant)
- Specialist support with apprenticeships and health and wellbeing
- Exclusive workshops and events



## LEAD GM TOWARDS A BRIGHTER FUTURE

---

Greater Manchester is on a mission to become the home of 'good' employment, and to do that we need to provide high quality training, developmental opportunity and stable work for all employees.

In support of the growing digital sector, Skills for Growth - SME Support and Serco have partnered up to provide high quality workplace learning for the sector.

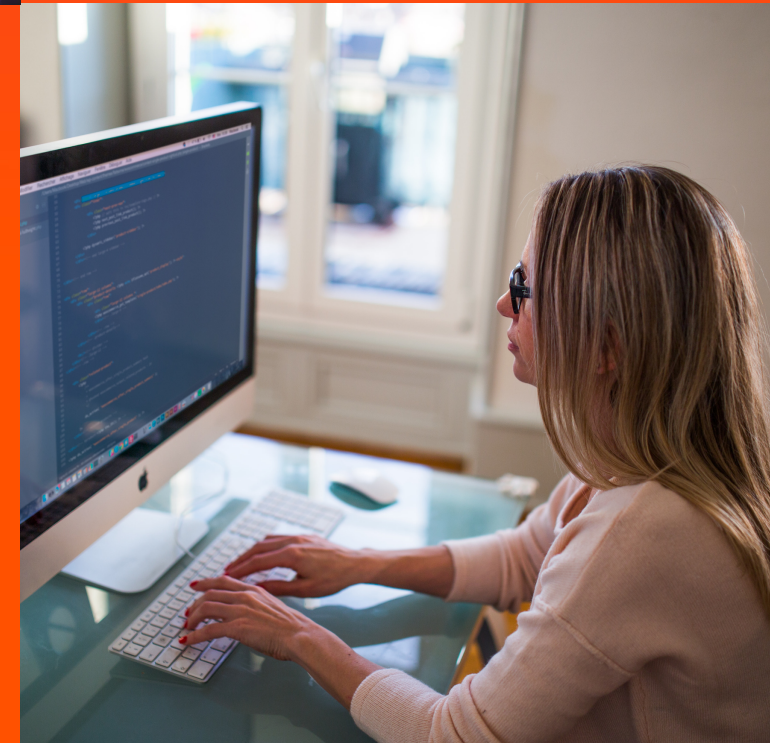


## GM SKILLS MAP

---

The easy-to-use Course Directory and Learning Management Portal for SMEs.

GM Skills Map gives you access to a broad directory of training providers and courses to suit your needs, and your dedicated Skills Coach will help you make the most out of this intuitive platform. Manage your employees' training, source providers and access 100s of additional bite-size training modules all in one place.







# SKILLS FOR GROWTH SME

[WWW.GMSKILLSMAP.CO.UK](http://WWW.GMSKILLSMAP.CO.UK)

[ENQUIRIES@SKILLSFORGROWTHSME.CO.UK](mailto:ENQUIRIES@SKILLSFORGROWTHSME.CO.UK)

0161 237 4444



European Union  
European  
Social Fund